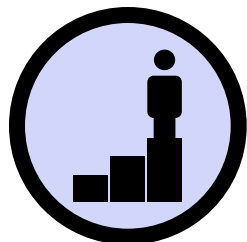


一站式MOCK系统

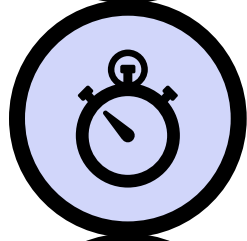


分享人： 刘晓攀

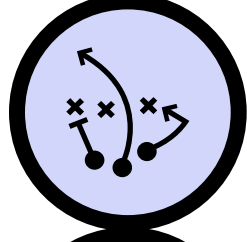
一站式MOCK系统



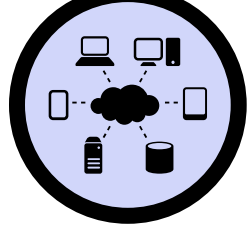
设计初衷



具有的特性特点

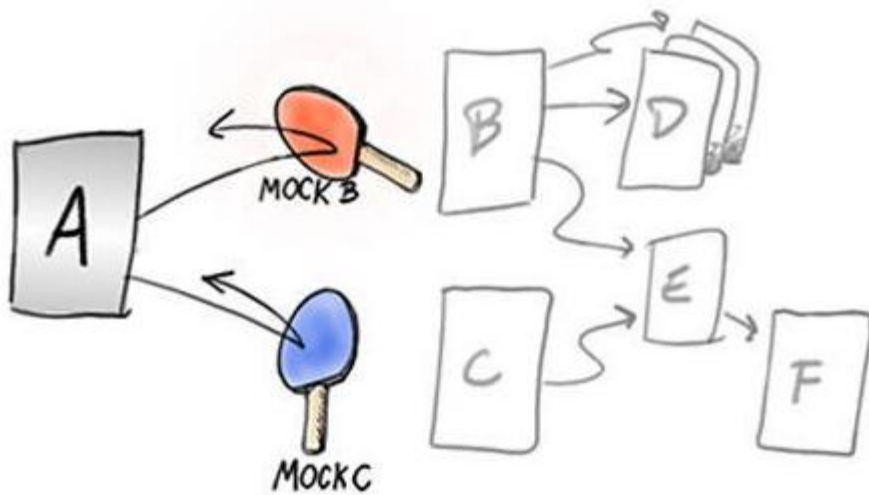


具体应用情况

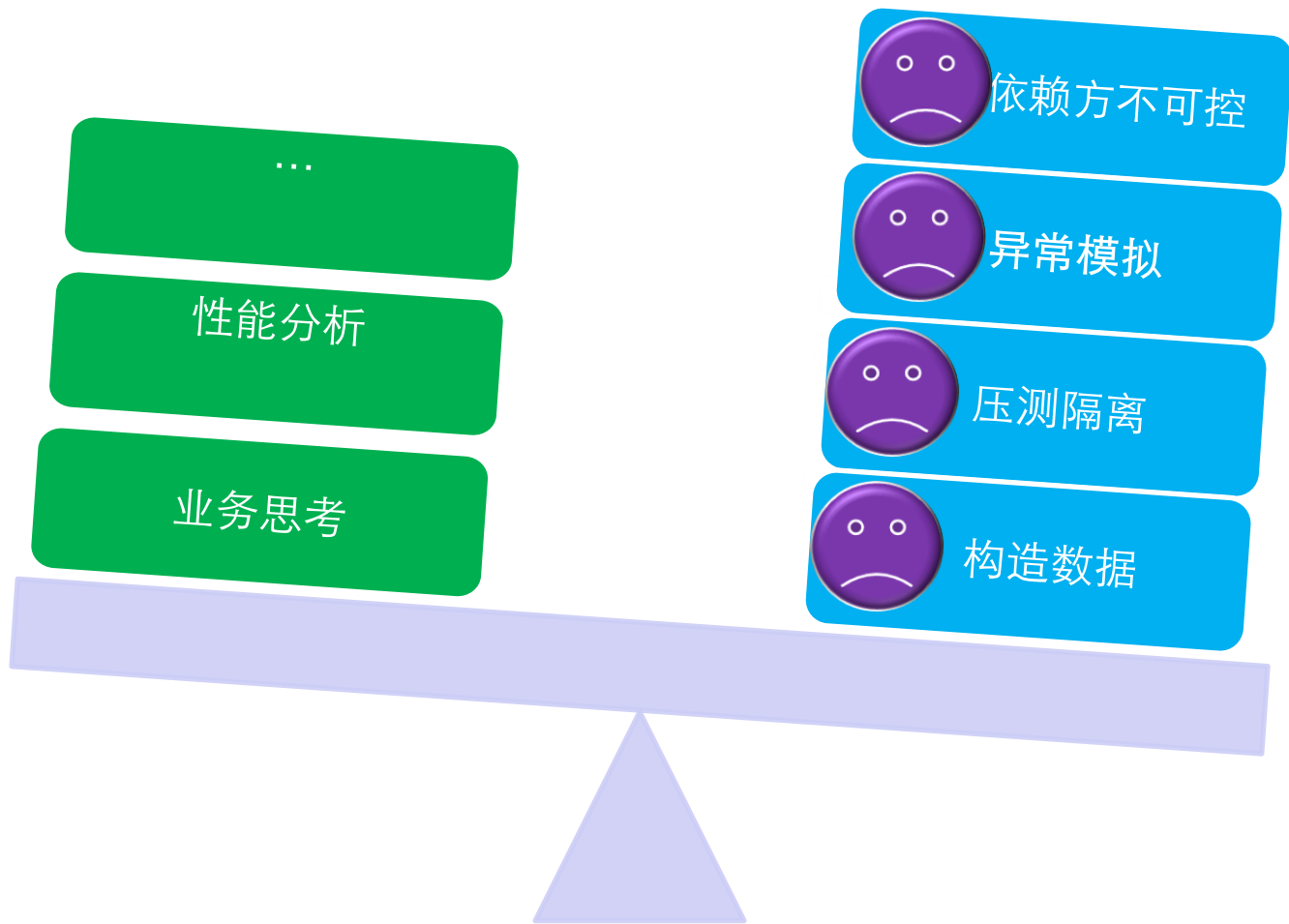


正在做的事情

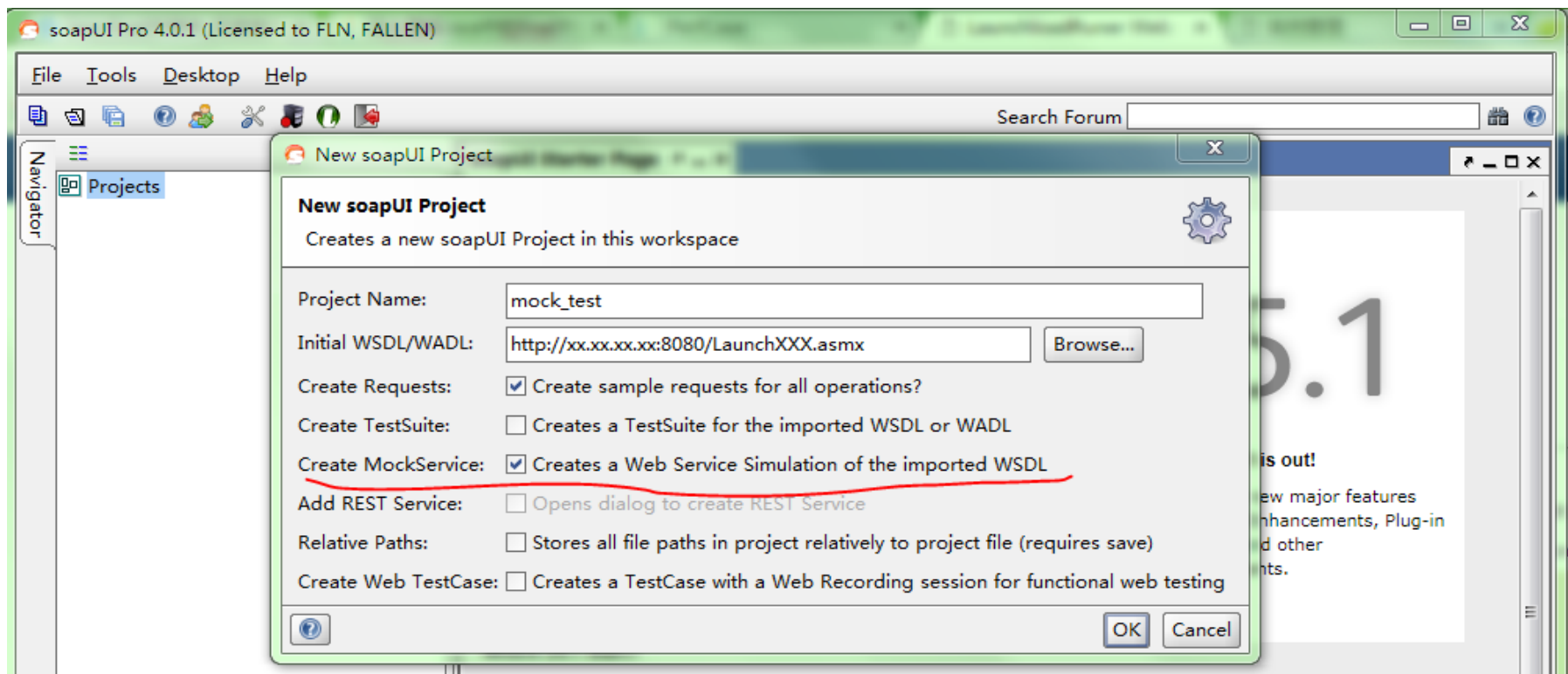
MOCK初识



设计初衷



常见MOCK工具



Mock之Fiddler

The screenshot displays the Fiddler Web Debugger interface. The main window shows a list of intercepted HTTP requests. An 'Options' dialog box is open, showing the 'General' tab with the following settings:

- Fiddler listens on port: 9909
- Act as system proxy on startup
- [Copy Browser Proxy Configuration URL](#)
- Allow remote computers to connect
- Reuse client connections
- Monitor all connections
- Use PAC Script
- Default LAN

The 'FiddlerScriptEditor' window shows the following JavaScript code:

```

if ((null!=bpResponseURI) && oSession.uriContains(bpResponseURI)) {
    oSession["x-breakresponse"]="uri";
}

if(oSession.HostnameIs("www.cnblogs.com") && oSession.fullUrl == "https://www.cnblogs.com/") {
    oSession.utilDecodeResponse();

    oSession.utilSetResponseBody("222222");
}
    
```

The browser window below shows the URL `https://www.cnblogs.com/` and the response content `222222`.

Mock具备的能力



Mock的应用

➤ 在无线APP端的应用

MOCK响应配置

- 服务Name
- 服务NameSpace
- 服务Operation
- 服务场景
- 应用环境
- 服务真实地址
- 延时时间 (ms)
- 是否启用

新客神券 - 国内酒店通用 - 当天有效

- ¥20 满100立减
- ¥40 满200立减
- ¥60 满300立减

显示酒店ID

测试酒店图片啥地方玩儿玩儿阿什顿发斯蒂芬斯蒂芬斯蒂芬怕搜到勤搜谱第法搜跑的xcvxcvz

暂无图片

暂无评分 高档型
距您<100米·上海·江桥工业区

¥222起

会展中心和颐酒店

暂无评分
距您200米·上海

¥333起

鼓浪屿永顺度假旅馆(厦门望海店)

4.1分 不错 44条点评 五星级

距您400米·上海·江桥工业区

海滨风光 浪漫情侣

阳台很好 沙滩美

¥1130起

酒店列表

```

CityID : 2,
DistrictID : 0,
CityName : "上海",
DistrictName : "上海迪士尼77",
ProvinceName : "上海",
CountryName : "中国",
CountryType : 1
},
HotelInfoList : [ {
  HotelBasicInfo : {
    HotelDataType : 1,
    HotelPriceType : 0,
    HotelSourceType : 0,
    HotelID : 4798434,
    CityID : 2,
    HotelName : "测试酒店图片啥地方玩儿玩儿阿什顿发斯蒂芬斯蒂芬斯蒂芬怕搜到勤搜谱第法搜跑的xcvxcvz",
    HotelAddress : "金钟路968号",
    ZoneName : "江桥工业区",
    LocationName : "长宁区",
    MedalType : 0,
    CityName : "上海",
    ToShowCityName : true
  }
}
    
```


Mock的应用

➤ 在无线web端的应用

房型	取消政策	设施&服务	人数上限	服务指标	均价	
 豪华房MOCK 房型介绍 ↗ 豪华特大号床或双床间 不退款 Booking.com 缤客	不可取消	无早 大床或双床 免费WIFI	2人	立即确认	RMB 1806 含税费总价为2125	预订 在线付 仅剩6间!

➤ 在性能压测/自动化中的应用

- 隔离被测应用和依赖应用，便于定位被测应用的问题。
- 提高自动化case稳定性

➤ 在异常测试中的应用

- 快速构造模拟异常场景，包含超时模拟，节点null,空值模拟等等。

MOCK优缺点

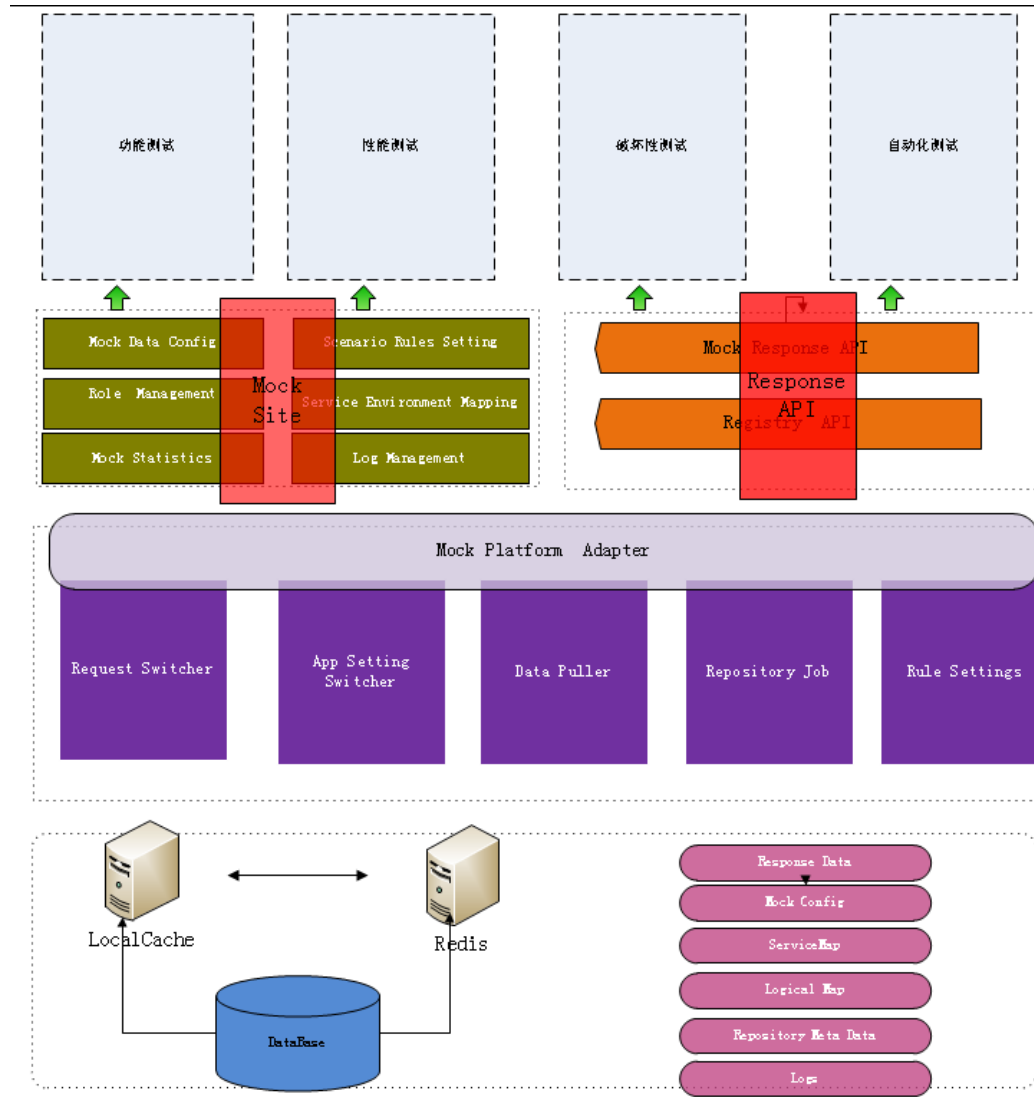
缺点

- ◆ 对契约的依赖比较大。需要频繁的跟新服务契约
- ◆ DB端操作无法模拟。

优点

- ◆ 数据完全定制化，节省了很多造数据的时间。
- ◆ 异常测试场景易于构造。
- ◆ 性能压测便于应用隔离，降低依赖的影响。
- ◆ 脱离框架层依赖，通用性高

MOCK系统整体结构



正在做的事情

DB MOCK...

Process Name	Source	Destination	Protocol Name	Description
System	10.2.5.202	10.2.35.217	TCP	TCP:Flags=...A..S., SrcPort=8333, DstPort=51492, PayloadLen=0, Seq=1646140609, Ack=6767995
System	10.2.35.217	10.2.5.202	TCP	TCP:Flags=...A...., SrcPort=51492, DstPort=8333, PayloadLen=0, Seq=676799591, Ack=16461406:
System	10.2.35.217	10.2.5.202	HTTP	HTTP:Request, POST /restApi/json/reply/PefApiJemitResult
sqlservr.exe	10.32.105.127	10.2.5.202	TCP	TCP:Flags=...AP..., SrcPort=63411, DstPort=55888, PayloadLen=792, Seq=809871776 - 809872568
sqlservr.exe	10.2.5.202	10.32.105.127	TCP	TCP:Flags=...AP..., SrcPort=55888, DstPort=63411, PayloadLen=4096, Seq=101292911 - 10129700
sqlservr.exe	10.2.5.202	10.32.105.127	TCP	TCP:Flags=...AP..., SrcPort=55888, DstPort=63411, PayloadLen=4096, Seq=101297007 - 10130110
sqlservr.exe	10.2.5.202	10.32.105.127	TCP	TCP:Flags=...AP..., SrcPort=55888, DstPort=63411, PayloadLen=4096, Seq=101301103 - 10130515
sqlservr.exe	10.2.5.202	10.32.105.127	TCP	TCP:Flags=...AP..., SrcPort=55888, DstPort=63411, PayloadLen=4096, Seq=101305100 - 10130920

Flag	Value	Description
CWR:	(0.....)	CWR not significant
ECE:	(.0.....)	ECN-Echo not significant
Urgent:	(..0.....)	Not Urgent Data
Ack:	(...1....)	Acknowledgement field significant
Push:	(....1...)	Push Function
Reset:	(.....0..)	No Reset
Syn:	(.....0.)	Not Synchronize sequence numbers
Fin:	(.....0)	Not End of data

Offset	Hex	ASCII
0098	00 70 00 70 00 72 00 6F	.p.p.r.o
00A0	00 76 00 61 00 6C 00 73	.v.a.l.s
00A8	00 74 00 61 00 74 00 75	.t.a.t.u
00B0	00 73 00 00 00 00 00 09	.s.....
00B8	00 E7 FF FF 04 08 D0 00	.çÿÿ..Ð.
00C0	00 0E 41 00 70 00 70 00	..A.p.p.
00C8	72 00 6F 00 76 00 61 00	r.o.v.a.
00D0	6C 00 52 00 65 00 61 00	l.R.e.a.
00D8	73 00 6F 00 6E 00 00 00	s.o.n...
00E0	00 00 09 00 E7 64 00 04çd..
00E8	08 D0 00 00 08 41 00 70	.Ð...A.p
00F0	00 70 00 72 00 6F 00 76	.p.r.o.v
00F8	00 65 00 72 00 00 00 00	.e.r....
0100	00 09 00 E7 64 00 04 08	...cd...

TCPPayload: SourcePort = 55888, DestinationPort = 63411

TCPPayloadData: Binary Large Object (4096 Bytes)

Any Question?



谢谢

