

移动端日志系统的构建与优化

主讲人:王龙海

时间:40min

1

背景

2

解决方案

3

实践

4

展望

开发透明



用户行为

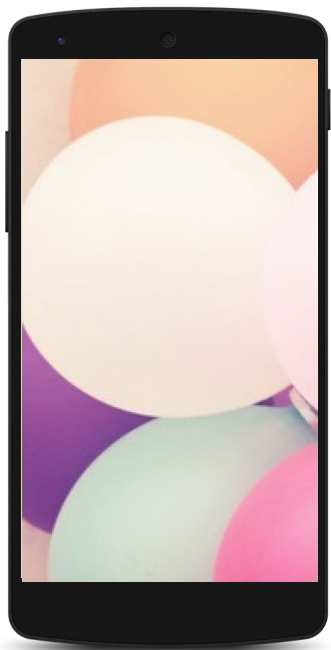


高效收集



敏感加密





Life

生命周期

Click

点击事件

K

KLog

Http

网络请求



友盟

主动调用接口

美团点评

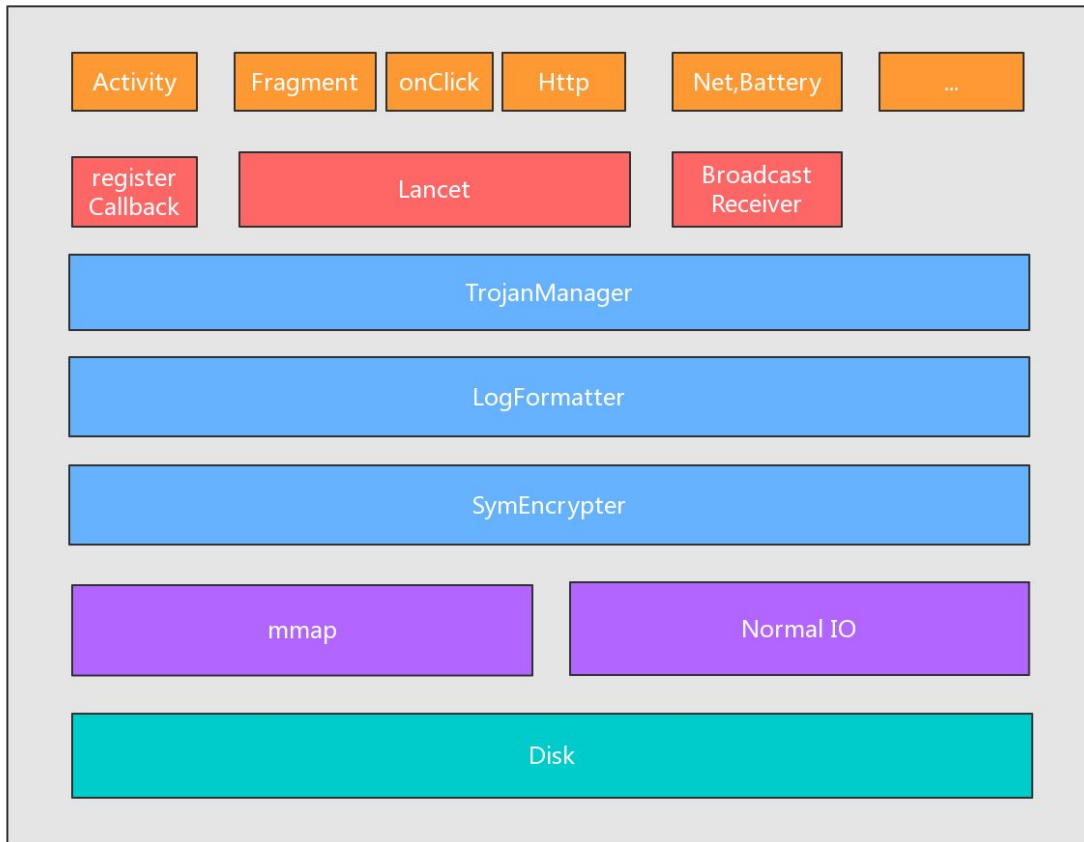
重写常用控件
AppCompatActivity

GrowingIO

字节码植入
不支持Instant Run

Mixpanel

获取snapshot
遍历View树



Lancet

@Proxy

@Insert

Scope

mayCreateSuper

Life

LifecycleCallbacks

onCreateView

onHiddenChanged

setUserVisibleHint

onClick

@Insert

getItemInfo

getFragInfo

getActivityInfo

ListView
getPositionForView()

RecyclerView
getChildAdapterPosition()

Fragment
onCreateView
setTag()

RootView
getTag()

View
getContext()

ContextWrapper
getBaseContext()



@Insert

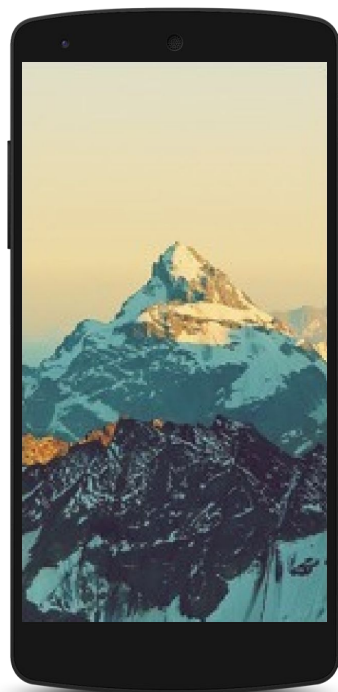
RealCall.getResponseWithInterceptorChain





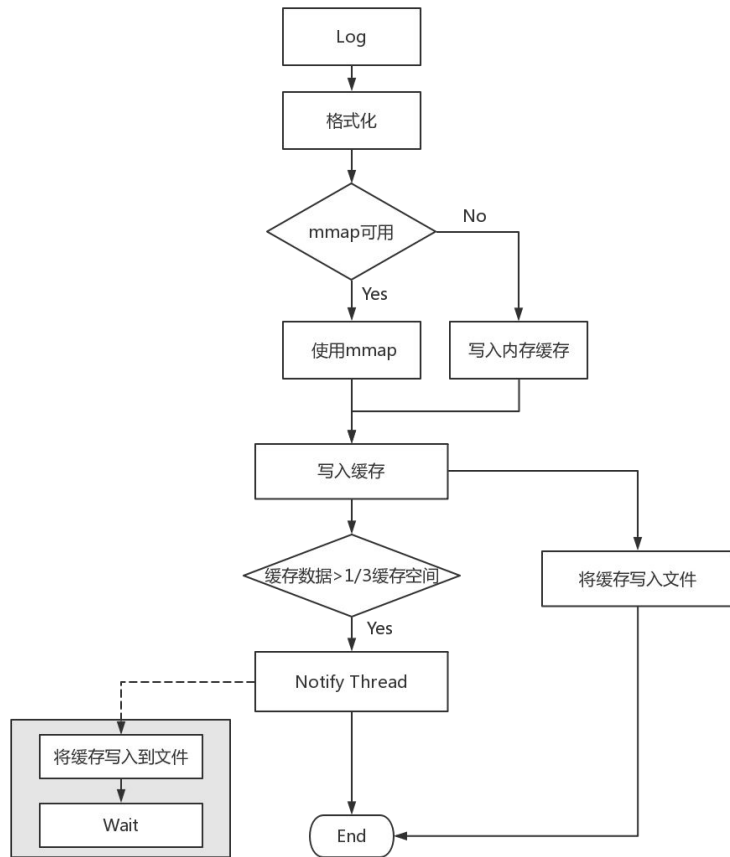
普通IO

- 定时回写
- dirty page 占比超量
- 内存不足
- 两次数据copy



mmap

- 调用msync或munmap
- 进程crash
- 内存不足
- 一次数据copy



1.0

大于1/3进行数据搬运

2.0

全局加密

3.0

单行压缩,实测效率不高

4.0

boost等依赖太多

1.0

文件动态增长, ftruncate耗时在ns级

2.0

只对指定的日志进行加密

3.0

整个文件压缩, 压缩率90%以上

4.0

无依赖, C++ 11标准

Mi5上, 映射大小为160K, 写入10000条大小为70字节的日志, 都不加密, 测试5次, 写入耗时对比(ms)

xlog

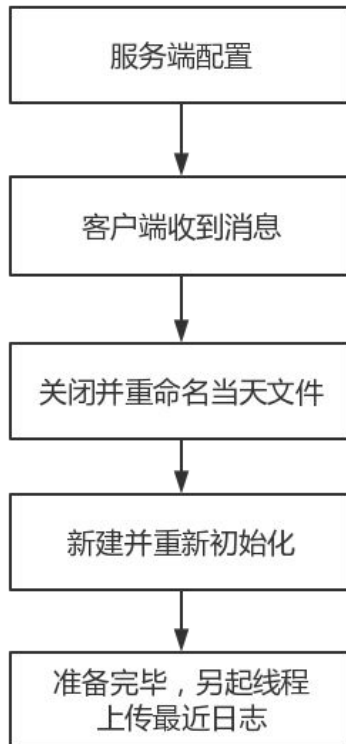
4553
 4957
 4671
 4225
 4827

trojan

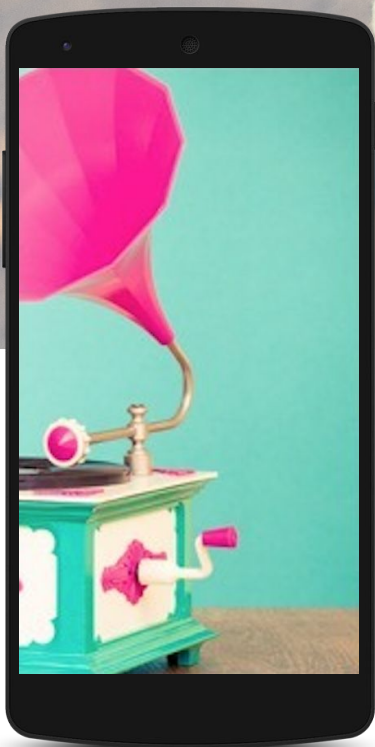
1820
 1785
 1817
 1796
 1765

java io

4289
 4286
 4142
 4186
 4137








ViewPath

WebView

操作回放

动态配置



Thank you for your time!
Questions?